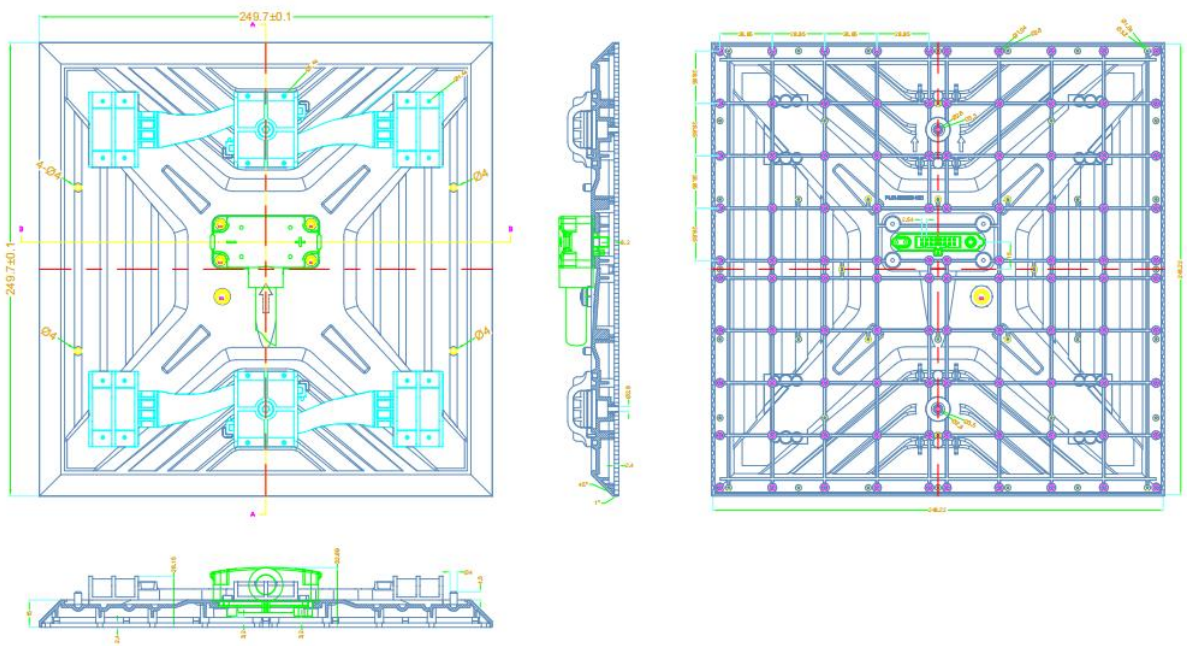


## P4.81-13S Outdoor



### Hole Position of P4.81



## Technical Specifications:

### Module

Pixel Pitch	4.81mm
LED Configuration	SMD1921
Module Size	250(W) × 250(H)
Module Resolution	52*52=2704Dots
Driving Method	Constant Current Drive 13S
Pixel Density	43264 Dots/m <sup>2</sup>
Drive Type	ICND2153AP
PCB Thickness	1.6mm
Refresh Rate	3840HZ
Brightness	4000cd/m <sup>2</sup>
Signal Pin	HUB75
IP Rating(Front/Rear)	IP65/54
Module weight	0.72Kg
Life Span	≥ 100,000 hours

### Optical

Color Temperature	2,000K—9,300K adjustable
Viewing Angle	Horizontal 160°, vertical 160°
Brightness Uniformity	≥ 95%
Contrast Ratio	≥5000 : 1

### Processing Performance

Brightness Control	256-Grade Manual/Automatic
Frame Frequency	60 Hz
Grey Level	65,536
Processing Depth	14-16bits (RGB each)
Video Support	Full HD、Ultra HD、SHV

### Power Supply

Power Voltage	100-240 VAC±15%
Max. Consumption	800 W/m <sup>2</sup>
Average Consumption	240 W/m <sup>2</sup>

### Working Environment

Operating Temperature	-20℃~+50℃
Storage Temperature	-20℃~+55℃
Operating Humidity	10~90%RH